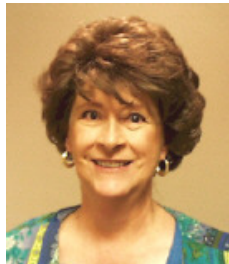




The President's Message— CONFESSIONS OF A DREAMER

Sharon Burson, EdD
National President of Psi Beta
Temple College, Temple, TX

Psychology professors and students frequently find the study of dreams fascinating. Charts detailing the Freudian emphasis on the symbolic meaning of various items in dreams make for animated classroom discussions. Dream theories such as the activation synthesis model appeals to those students who seek a biological explanation on dreams. Realistic, concrete thinkers prefer Hall's theory that dreams reflect current stressors. And other students enjoy delving into historical theories on dreams. All of these are intriguing viewpoints about dreams and worthy of psychological inquiry. However, I must confess, I frequently dream with my eyes wide open and invite you to join with me in a very different dimension of dreaming. At the risk of psychological heresy, I offer another theory of dreams voiced in the song lyrics of the Disney film, *Cinderella*, "A dream is a wish your heart makes." Granted that my theory may be somewhat difficult to examine under the microscope of science, but it merits our investigation.



Sharon Burson

The Psi Beta family is composed of just such dreamers. It started with a wish from the heart and literally transformed our lives. The dream to become a successful educator became a reality for those of you who are professors of psychology. The dream to enhance and deepen your connection with your students became a reality when you accepted the responsibility and privilege of Psi Beta sponsorship. Your personal dream became connected with a dream to encourage, inspire, and make a difference in the lives of Psi Beta members. You live out that dream on a daily basis with every student interaction

(Continued on page 2)

Inside this issue:

Awards	3
Allyn & Bacon Award Forms	4
Diversity Project	4
Psi Beta DVD Project	5
Regional News	6
PsiBeta Shines	7
New Members	9
New Chapters	10
New Advisors	10

Appreciating Carol Tracy

Help us celebrate the contributions and recent retirement of our beloved Carol Tracy, Founder and Executive Director for Psi Beta's first 24 and ½ years!!! As you may have heard, Carol retired last July. We are planning to formally recognize her years of outstanding leadership during the August 2006 meeting of the American Psychological Association in New Orleans. Whether or not you can attend, please leave your message of appreciation, a favorite Carol story, a greeting and well wishes at toll free: **(888) PSI-BETA Extension 711** Email a photo of yourself to michael@psibeta.org or mail to:

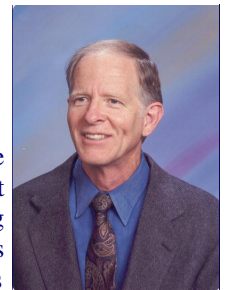
Michael McEwen
Psi Beta National Office
8918 W. 21st Street North
Suite 200, #179
Wichita, KS 67205

We'll play your recorded message at the celebration while showing your photo! Hey – it doesn't get any easier than that! If you have a picture of yourself and a phone, you are all set. If you want to go even further, record a video message and send the video clip instead. Either way, this is a great way to express your thoughts wherever you are! If you have questions about contributing photos, or leaving a pre-recorded message, please call Michael McEwen at 1-888-PSI-BETA Extension 702 Please get everything to Michael by July 30, 2006. Ψβ

Psi Beta Merchandise Study We Want Your Input Soon!!!

Jerry Rudmann, PhD
Psi Beta Executive Director

Interested in more modern Psi Beta tee shirts, more jewelry options, items that could be used for recognizing outstanding officers, fun stuff for your table at Campus Club Day? To answer this need, Psi Beta's National Council has commissioned a comprehensive merchandise study. The goal is to identify new items to make available to our membership. You can help our study by running a "Psi Beta Merchandise Focus Group" during one of your chapter meetings. **Step-by-step instructions and an accompanying PowerPoint with photos of various clothing and merchandise items are available for downloading at the Psi Beta website.** Go to <http://psibeta.org> Then, to report your focus group's findings, have your chapter delegate (or designate another officer) to complete the handy online report form – you'll see the link to this form at the Psi Beta website.



Jerry Rudmann

Ψβ

PSI BETA®



THE NATIONAL HONOR SOCIETY IN PSYCHOLOGY FOR COMMUNITY AND JUNIOR COLLEGES

The mission of Psi Beta is professional development of psychology students through the promotion and recognition of excellence in scholarship, leadership, research and community service

Spring 2006

Jerry Rudmann, Editor

Volume 26, Number 1

Psi Beta National Council

President

Sharon Burson, EdD
Social Sciences
Temple College
2600 South 1st Street
Temple, TX 76504-7435
sharon.burson@templejc.edu

President-Elect

Alberta Johnson, PhD
Social & Cultural Studies
Georgia Highlands College
3175 Hwy27 S, F145
Rome, GA 30162-1864
ajohnson@highlands.edu

Past-President

Jaye Van Kirk, MA
Behavioral Sciences
San Diego Mesa College
7250 Mesa College Drive G100
San Diego, CA 92111-4998
jvankirk@sdccd.edu

Regional Vice-Presidents

Eastern Region

Laura Bittner, MS
Social Sciences & Legal Studies
Carroll Community College
1601 Washington Rd.
Westminster, MD 21157
lbittner@carrollcc.edu

Midwestern Region

Heather LaCost, PhD
Psychology Department
Waubensee Community College
Rte. 47 at Waubensee Dr.
Sugar Grove, IL 60554-9454
hlcost@waubensee.edu

Southeastern Region

Alberta Johnson, PhD
Social & Cultural Studies
Georgia Highlands College
3175 Hwy27 S, F145
Rome, GA 30162-1864
ajohnson@highlands.edu

Southwestern Region

John Phelan, MEd
Department of Psychology
Western Oklahoma State College
2801 N. Main St.
Altus, OK 73521-1397
john.phelan@wosc.edu

Western/Rocky Mountain Region

Ginger Osborne, PhD
Department of Psychology
Santa Ana College
1530 W. 17th St.
Santa Ana, CA 92706
osbornes@hotmail.com

Executive Director Newsletter Editor

Jerry Rudmann, PhD
6025 Camino Correr
Anaheim, CA 92807
jerry@psibeta.org
Phone: 888-PSI-BETA Ext 701

Director of Chapter Relations

Michael McEwen
8918 West 21st Street North
Suite 200 #179
Wichita, KS 67205
michael@psibeta.org
Phone: 888-PSI-BETA Ext 702
Fax: 316-721-7631

President's Message

(Continued from page 1)

whether within or without the classroom. Those dreams that your dreams have sparked will live into a future that extends beyond your wildest imagination.

Student members of the Psi Beta family also share in big dreams! At sometime, someone somewhere had a dream for you. It started as a wish from the heart and then became a reality. Many of you overcame seemingly impossible obstacles such as age, time, money, family responsibilities and (Presidents Message, Continued)

work demands. It may have been that you were the only one who trusted your dream. You may have shared your dream

and been discouraged at the reaction it received. At times your dream may have faltered and grew dim. But through sheer hard work, perseverance and commitment to your dreams they became your reality. And now your dreams will move you into a future that has unlimited opportunities and challenges. Secure with the confidence that dreams can become real, you are confident about the adventures that lie ahead of you.

As the end of the semester draws closer, the pressures mount and stress builds up. There are tests to take, tests to prepare, projects to turn in, projects to grade, term papers to write, term papers to edit, library research to complete, and library resources to evaluate. In the business of these moments, the dreams for ourselves and others may temporarily fade into wishful thinking lacking any substance. It is so easy, with the duress of the semester's end, to lose sight of our dreams.

But this does not have to be so. Take a moment in all the press of your daily life. Revisit the dreams that led you to this level of success. Congratulate yourself for making your dreams a reality and remember to appreciate those who have made such significant contributions to your dreams. Resolve to keep working hard and persevere at this challenging time. Renew your commitment to your dreams. Continue to make all your dreams come true. Keep dreaming with your eyes wide open! And remember to dream even bigger and more grandiose dreams on your journey!

ΨΒ

Psi Beta Reaches Out to LA and MS Colleges

Alberta Johnson, Ph.D.

Vice President, Southeastern Region and President-Elect, Psi Beta

Numerous economists and disaster specialists project that recovery from Hurricane Katrina will take a long, long time. Not only did Hurricane Katrina destroy homes and businesses, it also wreaked physical and economic damage to many educational institutions throughout Louisiana and Mississippi.

In an effort to help college students receive support during their academic institution's recovery following Katrina's devastation, the National Council of Psi Beta voted to temporarily reduce its membership and charter fees for new collegiate chapters in Mississippi and Louisiana. Specifically, the charter fee is reduced from \$150 to \$75 while students and faculty can become lifetime members of Psi Beta for \$25 in lieu of the regular \$50 membership fee. This temporary fee reduction for the two hurricane-stricken states is in place until June 1, 2006.

It is hoped that some of the two-year and community colleges in Mississippi and Louisiana will take advantage of this opportunity to resume their educational networking as they strive to regain normalcy. Certainly membership in **Psi Beta** can offer students encouragement, support and recognition for maintaining distinguished academic records in pursuit of their personal goals. In times of need and crisis, **Psi Beta** chapters can and do respond much like a family unit, reaching out to help those members who will benefit from some assistance. ΨΒ

Awards

Allyn and Bacon Research Paper Award

Have you written a research paper in psychology recently? If you have, you may want to submit it to the Allyn and Bacon Research Paper Competition. This competition recognizes winners with handsome plaques and cash awards of \$500, \$300 and \$200 respectively. Paper submissions are due May 15, 2006. Please check the Psi Beta web-

site, under Forms and Awards for more information (<http://psibeta.org/Forms/2005-2006/AllynBacon/allyn-bacon.htm>). There are a few changes beginning this year. All submissions must be accompanied by signed "letters of understanding," one completed by the applicant and one completed by the chapter sponsor. These documents can be downloaded from the Psi Beta website. *Ψβ*

Psi Beta and PT@CC Sessions at the Annual Convention of the American Psychological Association in New Orleans in August, 2006

(Note: not all times and locations are finalized)

Psi Beta Symposium on Training Student Leaders

Friday August 11, 3:00 PM to 3:50 PM

Chair: Alberta Johnson, Highlands College

Participants: Ginger Osborne, Santa Ana College, *Educating Psychology Students for Leadership*

Sharon Burson, Temple College, *Leadership Under Duress—Dealing with Difficult Students*

Morial Convention Center / Meeting Room 334

Ruth Hubbard Cousins Distinguished Lecture

Saturday August 12, 1:00 PM to 1:50 PM

Chair: Sharon Burson, EdD

Dr. Robert Johnson, Umpqua Comm College, *The Two Most Important Ideas about Teaching and Learning*

Morial Convention Center / Meeting Room 281

PT@CC Symposium: The Last Lecture

Chair: Robert Johnson, Umpqua Community College

Participants: Maureen P. Hester, Holy Names University *In My End is My Beginning*

Patricia Puccio, College of DuPage *Warning: The Study of Psychology May Ruin Your Life*

Symposium: PT@CC/Psi Beta Innovative Teaching Techniques

Chair: John A. Phelan, Western Oklahoma State College

Participants: Laura J. Bittner, Carroll Community College *Service Learning: Bringing the Community into the Classroom*
Ladonna Lewis, Glendale Community College *Inclusion In The Classroom: Helping Students Connect With Psychological Science*

Symposium: Teaching, Learning, and Assessing in a Developmentally Coherent Curriculum (2 hour program)

Chair: Donna Killian Duffy, Middlesex Community College

Psi Beta and PT@CC Sessions (Continued)

Patricia Puccio, College of DuPage *Undergraduate Learning Goals and Outcomes: Past, Present, and Future*

Jerry Rudmann, Irvine Valley Community College, *Applying the Student Learning Outcomes Developmental Rubric to Assess Learning*

Joseph A. Mayo, Gordon College *Linking Authentic Assessment to Pedagogical Applications of the Developmental Rubric*

Vincent J. Granito, Lorain County Community College. *Community College Program Review: Assessment, Student Outcomes, and Curriculum Changes*

Psi Beta Conversation Hour – Celebrating Carol Tracy and Psi Beta's 25th Birthday!!!

Saturday August 12, 4:00 PM to 4:50 PM

Chair: Jerry Rudmann, PhD

New Orleans Marriott Hotel / La Galeries 6

Community College Student Research Paper and Leadership Awards Presentations

Saturday August 12, 5:00 PM to 5:50 PM

Chair: Alberta Johnson, PhD

New Orleans Marriott/La Galeries 6

Psi Beta / PT@CC Hospitality and Awards Hour

Saturday August 12, 6:00 to 6:50 PM

Chair: Skip Pollack, PhD

PT@CC Awards Presentations (Hospitality Suite TBA)

PT@CC Invited Address: The Diane F. Halpern Lecture

Chair: Susan K. Pollock, Mesa Community College

Stephen L. Chew, Samford University *Why Do Psychologists Think like Scientists but Teach like Dummies?*

First Undergraduate Psychology Conference Collin County Community College

Jennifer Brooks, Collin County Psi Beta Advisor

The date of the conference is Friday, April 29th, from 4-7pm at the new Preston Ridge conference facility. The FANTASTIC keynote speaker is Dr. Joshua Aronson from NYU, speaking on stereotype threat and mentoring. He promises to give an inspiring, relevant talk that will engage our students!

Students have many opportunities for involvement. Send them to the web-based interest form to apply to present their work, or help out on event day. There are many other options to if they want to use their talents to make the event a success. **Please, please share this link with your students.** Once student submit the form, They will contacted directly. The INTEREST FORM LINK is <http://covetedresearch.com/survey2/index.php?sid=11> The link is also available from the CCCC website: <http://iws.cccd.edu/sbrody/> *Ψβ*

ESSAY

John Phelan, Psi Beta Regional Vice-President

Why do I do it? Why do educators teach? We all have various reasons: teaching is rewarding, fun, keeps us young, and makes us feel we are doing something for the good of human kind. If we like what we do, getting up and going to class day after day becomes more a joy of the heart. It is fun! After 29 years in the profession, teaching, kindergarten through sophomores in college, I can find much enjoyment in teaching, especially with student interaction and the encouragement of critical thinking.

Anyone can stand in front of the class, read the book, and answer the study guide. What do the students get? The result may be a passable knowledge of subject matter thinking, and possibly a burned out teacher. With modern innovations such as the Internet, E-mail, WebCt, Pageout, chat rooms, white boards, and PowerPoint, the classroom should be the setting for positive learning experiences each and every day.

I strongly believe helping students learn research and study fundamentals plus critical thinking skills, are major undertakings. The freshman and sophomore years at any community college, or university level often set the foundation for future success or failure. Often, these crucial first two years are considered to be 13th and 14th grade. I strongly believe that I do not teach the 13th and 14th grades. I educate college students. I expect my students to learn fundamental skills and it is my goal to get them there. Left and right brain skills. If they choose not to do this, it is my goal to get them there. I hold my students accountable. Freshman and sophomore students need to be made aware of critical thinking. If I can reinforce the left and right brain capabilities of my students, I have prepared them to become professionals.

Access to the Internet allows my students the chance to find the information they need. I have Internet access in my classrooms. I use PowerPoints for outlines in addition to class discussion and the textbook. PowerPoints are downloadable for in class use by the students. I create my own slides and incorporate those provided by the text. These slides become the outlines for basic research and critical thinking. With access to chat rooms and online white boards, communications with the students can be constant. Students can also ask questions and problem solve among themselves. If I cannot answer a question, we can find the answer together using one or more of these innovations in the classroom. WebCt and Pageout are wonderful platforms I use for class organization because of text support and student access. Testing, weblinks, and PowerPoints are accessible to each student. By using these components for critical thinking, one more part can be added, Service Learning.

Along with the classroom learning, I believe in Service Learning. Academic Service Learning is a form of service incorporated into the classroom setting. My students choose writing papers or a service learning project every semester. Each project requires research. However, service learning allows the student to “give back” to the community. They may choose to do this in the public schools, the public library (literacy), retirement centers or vari-

ous other community endeavors. Skills in reading, math, bilingual speaking, or mentorship can make a difference in someone’s life. It is a joy at the end of each semester to read portfolios the students submit for their service learning project. Students must keep a journal and then write a short paper on the how’s and why’s of their projects application to psychology. Many students are emotional with the final question being, “Can I do this again?” “I’ll even do it without credit.” Creativity and critical thinking are a need we all must endeavor to do, especially in a time of such button pushing ease created in our society. Let’s all work to play with the box and not what came in it.

Students have not only helped in the community, they have learned a valuable lesson about themselves. This is something that cannot be found just in the modern innovations found in our classrooms. The limited time we have with our students each semester has to create a synergy for life. Let’s enjoy and use it while we can.

DP2KB ANNOUNCEMENT

The Diversity Project 2000 and Beyond Committee is currently soliciting applications for the 2006 Summer Institute. This year’s program will be held in New Orleans, Louisiana, August 8-August 11. Diversity Project 2000 and Beyond (DP2kb) is a national mentoring and leadership program held in conjunction with the Annual Meeting of the American Psychological Association. This program is a cooperative effort of the American Psychological Association, Psi Beta, the National Institute on Drug Abuse and the Center for Mental Health Services. Psi Beta students who self-identify as a member of one of four ethnic minority groups—Black/African-American, Hispanic/Latino, American Indian/Alaska Native, or Asian American/Pacific Islander—are strongly encouraged to submit an application. Chapter advisors are strongly encouraged to nominate students for this program as well. The purpose of this program is to increase the number of ethnic minority students pursuing graduate degrees in psychology. Since its inception in 1994, more than 300 hundred students have successfully completed the Summer Institute. If you are interested in applying, please follow the application procedures printed in this newsletter and submit your application package to:

Dr. Robin Hailstorks, Chairperson
Department of Psychology
301 Largo Road
Largo, Maryland 20774
Email: rhailstorks@pgcc.edu
Fax: (301) 808-0418

The deadline for applications is Friday, May 5, 2006. If you have any questions regarding DP2kb, please contact Dr. Hailstorks by emailing her or telephoning her at (301) 322-0539.

Help Us Make the Psi Beta DVD!!!

Psi Beta is preparing an important DVD. The DVD, which will commemorate our 25th anniversary, will also prove helpful for recruiting new chapters, advisors, and members. In preparing the DVD we are looking for photos or video clips showing students engaged in any of the following activities, which demonstrate Psi Beta's mission

1. **Scholarship**
 - A. Being honored by accepting awards
 - B. Accepting awards for winning papers, other competitions
 - C. Graduation wearing honors stole, cords, and/or medallion
2. **Leadership**
 - A. Running meetings
 - B. Engaged in group planning sessions
 - C. Other examples of leadership
3. **Research**
 - A. Poster presenters
 - B. Running participants while doing research
 - C. Attending presentations on psychology research (at conference or at school listening to an invited speaker)
4. **Community Service Activities**
5. **Fellowship** – Students having fun!
 - A. Club day booth
 - B. Having a meal together
 - C. Other social events

We Also Want Student and Advisor Testimonials for the DVD -- In addition to photos or video clips of Psi Beta students in action, we are also seeking testimonials of Psi Beta students and advisors. Videotaped testimonials should be no longer than 5 minutes. The topic: "What Psi Beta has meant to me." Please include the student or advisor's name and college with the tape. Suggestions for video taping are below.*

Don't Have a Camera or You are Camera Shy? No worries! Those without a video camera can call and record their testimonial at this toll free number: **888-PSI-BETA Extension 711** Just call, identify yourself, your college, and leave your message. Then, send or email a photo of yourself to jerry@psibeta.org or Jerry Rudmann, Interim Executive Director of Psi Beta, or to this US Mail address:

Jerry Rudmann, 6025 Camino Correr, Anaheim, CA. 92807.

There is a good possibility that your testimonial and picture will appear on the DVD. Hey – it doesn't get any easier than that! If you have a picture of yourself and a phone, you are all set. Please get everything to Jerry Rudmann by

July 30, 2006.

These suggestions are designed to help you tape a student testimonial.

1. Mount the camera on a tripod
2. Use a camera that records to DV tape
3. Always put a lapel microphone on the student
4. Use a light on the camera - otherwise lighting on subject will reduce the quality of the video
5. Do all taping in a quiet room - no competing noise
6. Try to use a plain background
7. If background is bookshelves, etc, try this: pull camera back a little from the subject, then use manual focus to bring the subject into clear view, but leaving the background somewhat blurry
8. Tape extra shots of the subject's hands or something else in the room (e.g. close up of book shelves, a shot taken behind and over the subject's shoulder showing the interviewer. Why get these shots? Because they are needed to fill in places where some cuts of the testimonial may need to be edited out -- rather than have awkward changes when two cuts are spliced together, the extra shots can be shown instead, giving the impression of a much smoother transition, or hiding the transition altogether.

By May 31st 2006, please send all materials to:

Dr. Jerry Rudmann
Interim Executive Director of Psi Beta
6025 Camino Correr
Anaheim, CA 92807

Donations Needed - Please consider making a donation to the 25 year DVD project. Creation and distribution of the DVD is above and beyond our normal operating budget. For every dollar contributed to the DVD project, an anonymous donor and long time friend of Psi Beta will match your donation! Your donation dollars are automatically doubled! So far we have raised \$420 dollars in donations to this worthy project. Send donations to Jerry Rudmann (see above address).

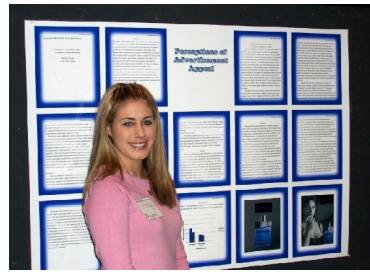
A Neat Way to Donate - McGraw-Hill has launched their "We Listen" campaign. Please take this survey and tell your psychology instructor colleagues about it. The URL is www.mhhe.com/psy/survey A message from Melissa Caughlin of McGraw-Hill: *We're all really excited about it [the survey] at McGraw-Hill, because it lets us learn so much about our customers. Ideally, we'll take what we learn to create better text and multimedia products for the classroom, which will benefit both instructors and students. Part of the "We Listen" campaign is for instructors to fill out a brief online survey. If they do this, we will donate \$25 to Psi Chi or Psi Beta - their choice. This campaign will continue over the next three years so we'll continue to provide donations to you.*

If you have any questions regarding taping or making donations, please call Jerry Rudmann at 714-241-6338 or email him at jrudmann@ivc.edu

Your help is greatly appreciated.

Save Time (and the Headaches) in Preparing Beautiful Poster Presentations

Dr. Kari Tucker
Psi Beta Advisor
Irvine Valley College



Jenelle Beazley
IVC Chapter President, at WPA

How many extra hours have you spent trying to get your poster presentation “just right” only to print it out and one line is out of place, or one page seems to look different from the rest. Perhaps you thought that you would finish it at the hotel when you arrived, or pull an “all-nighter” the day before you had to leave. Does this sound like you or someone you know?

Well, these days might be over—not because you have vowed never to create another poster again, but because there’s an easier way! With benefit of technology, it is possible to create your entire poster presentation on a PowerPoint slide, email it to a company, and then have a beautiful 48 X 72 (or what ever dimensions you specify) laminated poster mailed to your doorstep in less than a week. Companies that provide these services (e.g., www.postersession.com) even provide free templates from which to choose, giving you several options for the perfect dimensions for your poster. You are still able to manipulate the color, font style, content, and overall layout if you choose, and have your poster laminated (gloss or matte) or not.

The cost of one of these posters is a downside. One poster could cost between \$110.00 and \$228.00 depending on the size and choice of lamination. Extra large posters (48 X 96) could cost about \$300 or more, but splitting the costs and fund raising events could reduce the financial burden. As a result, you could have posters displayed around your college or in a classroom for years to come.

Learning about this option for creating posters has enabled me, as a Psi Beta advisor, to spend less time overseeing the less relevant but important details of creating posters, and to spend more time generating new research ideas or thinking about the next research project with my students! $\Psi\beta$

Psychology Synergy Conference

On October 6 & 7, 2006 Collin County Community College in Plano, Texas will host a Psychology *Synergy* Conference. The conference was developed to afford psychology enthusiasts from both 2-year and 4-year institutions from around the country the opportunity to interact and inform on current issues in the discipline. “Synergy is the interaction of two or more agents or forces so that their combined effect is greater than the sum of their individual effects” (American Heritage Dictionaries). A conference where psychology faculty can network, and students exchange ideas from both perspectives is idyllic.

At the Psychology *Synergy* Conference, we are thrilled to feature two prominent guest speakers. Dr. Stephen F. Davis, Distinguished Visiting Professor of Psychology at Texas Wesleyan

(Continued on page 7)

Chapter Activities Eastern Region News

Anne Arundel Community College

Among other events, the chapter hosted three excellent speakers. Dr. Wainwright spoke on “Why are all the Black kids sitting together in the cafeteria?” William Gonnelli, an FBI interrogator, performed a lie detector test. Peter Grube, a play therapist, spoke on play therapy and computers. Psi Beta members attended the EPA regional psychology conference in Baltimore. A Psi Beta alumni panel was one of the EPA highlights.

Middlesex County College

Mixing Education and Psychology at Middlesex County College: Middlesex County College’s Psi Beta Chapter has been involved with a whirlwind of activity during fall 2005 and spring 2006 semesters. MCC’s Psi Beta chapter often works hand-in-hand with its sister organization, the People In Education (PIE) club. PIE is an organization that is primarily geared for education majors that are pursuing a career in teaching. These education majors often desire a dual major in psychology and education. Psi Beta and PIE certainly complement one another other due to the inescapable fact that psychology plays such a vital role in any classroom environment. The clubs sometimes plan trips together when the topics are of mutual interest to members.

In November 2005, PIE and Psi Beta members attended the annual New Jersey Education Association’s conference in Atlantic City. Many colleges were represented in the Grand Ballroom along with many education vendors. There were many workshops for teachers and future teachers. MCC’s Psi Beta and Education club obtained much information about potential transfer to the upper-division institutions that were represented. Members of both organizations also learned about many classroom techniques based on sound educational psychology research-based principles.

Psi Beta and PIE ran several fundraisers this year (and split the proceeds for funding their events). Candy sales was a huge success. MCC’s College Night occurred in the fall semester. Our clubs were active participants in the College Night festivities, and sponsored a dinner for two at an upscale restaurant. As another fundraiser, the Psi Beta members sold pizza during the College Night. More important than the money raised, was the camaraderie that developed among club members.

In February members visited Princeton House, a behavioral health care provider that has a highly qualified team of board certified psychiatrists and social workers. The team provides the highest quality care for people who need psychiatric support, suffer from chemical dependencies, or are dual diagnosed. The chapter appreciates the assistance of Elliot Driscoll, Director of Substance Abuse, and Eliza Cobeth Leech, MSW. These professionals orchestrated the presentations and the tour. Psi Beta members were given a “behind-the-scenes” look at the facility. Members signed privacy statements and more fully under-

Chapter Activities

(Continued from page 6)

stood the importance of ethical behaviors via this first-hand experience. Members suggested repeatedly that this tour was an eye-opener.

Also in February, in an attempt to reduce the stigma often associated with Mental Illness, Psi Beta sponsored a seminar led by faculty member Amy Spagnola, an Assistant Professor at the University of Medicine and Dentistry of New Jersey (UMDNJ). This seminar addressed schizophrenia and bi-polar disorders. Two self-identified long-time victims of mental illness provided an opportunity for our Psi Beta and Education Club students to ask questions about the lives of victims, about how successfully they adjusted to mental illness, about any recurrences of symptoms, and about their experiences with various diagnoses and treatments. Students also participated in a pre- and post-meeting questionnaire-based research project. Professor Spagnola's presentation and seminar was a joint venture with UMDNJ's Division on Mental Health Services. Patrick Kurnger is the prominent UMDNJ researcher who is investigating stigmas connected with mental illnesses.

The most dedicated Psi Beta members regularly assist at Elijah's Promise, a soup kitchen in Middlesex County. Members help by making and serving sandwiches. Our members' involvement may be considered simple by the uninitiated; however the feelings that are associated with "giving something back" had members report that they felt as if they were performing a most meaningful task.

Two Psi Beta members and club advisor, John Gutowski (also the chairperson of the Psychology and Education Department) attended the Eastern Psychological Association Conference in Baltimore, Maryland on March 18. Professor Gutowski reported very favorably about some exciting research done concerning attitudes held towards those with tattoos that was conducted by students at a sister community college in NJ (Brookdale Community College). Students and Professor Gutowski attended the Psi Beta luncheon and heard presentations from Psi Beta members who transferred to upper division colleges and universities. Their words to the wise provided good direction for our 2-year students about the perils of transfer and the necessity of good statistical skills as they continue to study psychology. Professor Gutowski and club members went to a "Dutch treat" dinner organized by Psi Beta, during which he told his arguably funny but definitely inimitable psychology story. All activities considered, this was an extremely eventful year for Psi Beta, National Honor Society in Psychology - Middlesex County College Chapter. $\Psi\beta$

Psychology Synergy Conference

(Continued from page 6)

University will present, "Cheating in High School is for Grades, Cheating in College is for a Career: Academic Dishonesty in the 21st Century." Dr. James W. Kalat, Professor of Psychology at North Carolina State University will speak on, "Recent Developments in Biological Psychology." Along with these guest speakers, planned workshops and symposia will emphasize both teaching and student interests.

(Continued on page 11)

Psi Beta Shines at the Eastern Psychological Association Conference

Laura Bittner

Eastern Regional Vice President

The Eastern Psychological Conference was held March 16-19 in Baltimore at the Wyndham Inner Harbor Hotel. Psi Beta was well represented and well attended. On Friday morning Psi Beta, Psi Chi and APA co-hosted the *Careers in Psychology for the 21st Century*. Dr. Norman Anderson, the CEO of the American Psychological Association, gave the keynote address. Dr. Anderson discussed the many areas that psychologists work including health, law, biology, aviation, media, sports, education, business, executive coaching, leadership, and work with children and the elderly. He stressed the need for psychologists to become entrepreneurs, to be creative and learn to market themselves. He also talked about the need for students to let themselves evolve, stating how common it is for psychologists to change interests within the field and used his own career changes as an example, leading him to his present position as CEO of APA. After Dr. Anderson concluded his presentation, professional psychologists in various sub-fields discussed their areas of expertise and advised students to expand their breadth of coursework in undergraduate school and include courses in the areas of English, writing, math, ethics and philosophy.

On Saturday, Psi Beta sponsored a variety of symposiums and panel discussions including a presentation by Joel Morgovsky (Brookdale Community College) on "State-Wide Psi Beta: What's In It For My Chapter." He discussed the value of Psi Beta chapters collaborating on a state-wide level and sharing his experiences with having state-wide Psi Beta meetings in New Jersey. This presentation generated ideas about what type of events and activities can be accomplished through such collaboration.

Another symposium was presented by members of NAMI (National Alliance for Mental Illness) titled "In Our Own Voices: Living With Mental Illness," given by two members who discussed their journey with mental illness including discussion about their "dark days," acceptance of their illnesses, treatment, coping, and future dreams. This was a great session that had over 70 people in attendance, with attendees sitting in the aisles and with standing room only! Next came the session on "Uncertain Journey" also sponsored by NAMI and given by two mothers who spoke about the challenges faced by family members of mentally ill people. Both of the NAMI sessions allowed for audience discussion and both sessions received much positive feedback from attendees.

Thanks to APA and various book publishers, Psi Beta and PT@CC hosted a lunch and panel discussion that consisted of 4-year college and graduate students who spoke with Psi Beta members about expectations and experiences beyond the 2-year level.

Our last session was a presentation given by Dr. David Wiseman (Brookdale Community College), entitled "Guiding Psi Beta Students in Planning, Completing, and Presenting Experimental Research in Social Psychology", where he discussed his student's research emphasizing each step in the research process. This session also generated discussion

(Continued on page 8)

Psi Beta Shines at the Eastern Psychological Association Conference

(Continued from page 7)

and ideas for continuing research in this area.

Last, but certainly not least, most of the Psi Beta chapters at EPA met for a sharing of their chapter activities and events and discussed ideas for programming at next year's conference in Philadelphia. We ended our day with dinner at a nearby Irish Pub where we had 30 people meet, mingle and share a meal together. At least seven Psi Beta chapters attended and participated in this regional conference and all of us, both students and advisors alike, should be proud of Psi Beta's contribution at EPA! $\Psi\beta$

Chapter Activities Midwestern Region

Oakton Community College, Des Plaines, IL

The Spring 2006 Induction took place on March 29, 2006. The inductees for the Spring 2006 were as follows: James Andresen, Margaret Archer, Jennifer Cali, Dr. John D'Anca, Rachel Dennis, Svenjamol Elackatt, Louise Fugiel, Lilia Garcia, Edward Halverson, Danika Kenn, Cassandra Lopez, & Adina Weber. The following officers were also installed: Vice President - James Andresen, Secretary - Jennifer Cali, Treasurer - Holly Hoffman, Speaker Committee Chair - Margaret Archer, Service Committee Chair - Adina

Weber, Public Relations - Edward Halverson. February Speaker - The chapter invited Dr. Larry Wexler to make a presentation on March 8th on "The Psychology of Happiness." We were pleased with the nice turnout of approximately 30 students to hear Dr. Wexler discuss this relatively new area of positive psychology that is focused on what life-style and activities lead to happiness and optimal functioning. This movement has been spearheaded by Martin Seligman who contends that psychology as a science has for the last half century directed its attention to mental illness and provided us with a good deal of knowledge about depression, anxiety, schizophrenia as well as the possible genetic and psychological causes of these dysfunctions. But, in the process, psychologists neglected what creates positive emotion, positive strengths and virtues as well as positive institutions as democracy and strong families. Dr. Wexler discussed what activities do and do not lead to authentic happiness--that is, the positive feeling that arises from the exercise of strengths and virtues, rather than from the shortcuts to pleasures. Based on Seligman's research, the exercise of kindness is a gratification in contrast to a short-term pleasure--such as watching a movie, or eating a hot fudge sundae. In Seligman's words, "The exercise of kindness is a gratification . . . as it calls on your strengths to rise to an occasion and meet a challenge. A separable stream of positive emotion like joy does not accompany kindness; rather it consists in total engagement and in the loss of self-consciousness. Time stops." Wexler discussed how crucial it is for each of us to identify our strengths and virtues, as they are the routes by which we achieve good feeling and gratification. Research on cultures throughout history and around the globe have revealed an incredible agreement on six universal virtues that are valued and endorsed: wisdom and knowledge; courage; love

and humanity; justice, temperance and spirituality and transcendence. The crucial aspect to this area of research is the genuine conviction that the full and meaningful life is available to all of us relative to the choices we make about our present activities, choosing to view our past through the lenses of gratitude and forgiveness and viewing the future with hope, faith and optimism. Dr. Wexler's presentation was inspiring and informative.

Southwest Region Collin County Community College Psi Beta Networks at Recent Mixer

A fun-filled evening of Legos and psychology trivia... must be Psi Beta.

Collin's chapter of Psi Beta hosted its first annual mixer in November. Collin put on the event to provide opportunities for team building, networking, increasing awareness of Psi Beta and upholding the chapter's core value, to foster a scholarly community. The Psi Beta officers and advisors planned an evening full of team building, ice-breakers, networking, brainstorming, collaborating, social interaction and the creation of a student directory. Psi Beta has offered Collin students many opportunities in the field of psychology, such as active, hands-on research.

Psychology major Kim Tanuvasa served as Psi Beta president from 2004-05 and now plans to pursue a doctorate in counseling psychology with special interest in counseling women and children of domestic violence and sexual abuse. She enjoys Psi Beta because the organization's focus is on students working together to excel. "The research we have been involved in helped us gain vital research skills, strengthened our writing and analytical skills, and built a strong foundation for teamwork. All the things we've learned, although not traditionally offered at two-year schools, will certainly help us excel in graduate school," Tanuvasa said.

Currently, advisors Jennifer Brooks & Valerie Smith are working towards a shadowing program between Collin and its four-year dual admissions partner colleges who have Psi Beta's sister honor society, Psi Chi. "By facilitating contacts between campuses, students at Collin would be afforded the opportunity to have first-hand accounts of the areas of interest and expertise of faculty from the surrounding university communities," said Valerie Smith, chair and professor of Behavioral Sciences. To expand their network, Collin invited advisors and students of university programs who have Psi Chi chapters, such as the University of North Texas (UNT) and Texas A&M University-Commerce.

After she completes her basic courses at Collin, Chrysta Martz, Psi Beta historian, plans to transfer to UNT. At the mixer, she had the chance to talk to students from UNT. It [meeting the other students] will benefit us so much, not just for Psi Beta but also on a personal level. It gave the transfer students a chance to see what comes next, and it gave both sides a contact for when more research is needed," Martz said. Shirley Allen, Psi Beta president and a psychology major who plans to earn a doctorate from Southern Methodist University in the philosophy of psychology, also felt that the mixer was a great networking tool. "Our hope was to create a networking opportunity between all local Psi Beta and Psi Chi chapters as

New Members

These are the names of new members whose registrations were received by the Psi Beta national office after the publication of the Fall 2005 Psi Beta Newsletter. Registrations received after April, 1st 2006, will appear in the Fall 2006 Newsletter. The following abbreviations are used below, CLG for College, CC for Community College, COC for County College, COCC for County Community College, CTC for City College, TC for Technical College

Brevard CC (FL)

Anglin, Brain
Bailey, Kayla M
Bomgardner, Dana M
Bradshaw, Rose A
Centeno, Amy A
Christensen, Corina
Crawford, Kimberly M
Crawley, Jenna R
Hackett, Ashley N
Ingram, Crystal A
Jenkins, Lori L
Kinsley, Sarah L
Kirschten, Samuel J
Lohaus, Brandon W
Money, Kaitlin E
Parrish, Barbara K
Randolph, Courtney
Ranieri, Kristen L
Rompney, Anna N
Rowsey, Tara
Smith, Sarah A
Townshend, Jacob
Zackeroff, Sandra L

Brookdale CC (NJ)

Groves, Melanie A

Camden COC (NJ)

Albertelli, Helen M
Baker, Priscilla C
Blair, Lonnette C
Clark, Janice A
Damico, Gian W
Dorner, Jacqueline B
Eckhart, Rebecca L
Fowler, Kathleen P
Freudenberg, Rose A
Gallagher, Carolyn E
Gibson-Kellam, Lisa R
Haberle, Richard M
Howard, Gwendolyn A
Ilgenfritz, Laura E
Kelly, Shae L
Kimball, Andrew N
Massie, John D
Meluso, Angela C
Monson, Jennifer J
Morici, Monica
Pajdak, Kimberly L
Patel, Bindiya H
Shah, Nihit M
Steen, John J
Stobezki, Isaac
Walko, Robin M
Williams-Victor, Varnnie
Wynn, James W
Yurick, Heather A
Zapata, Lauren K

Carroll CC (MD)

Conner, Robert L
Daniller, Betsy A
Dolan, Beth M
Halliwill, Sara E
Harris, Brandon S
Jirsa III, Joseph E
Knight, Ryan M

Korman, Jeannie M
McClain, Josh T
Rettberg, Jackie L
Saltysiak, Marc I
Stallings, Lauren M
Taylor, Christina M
Tull, Valerie C
Wilhelm, Penny A
Zimmerman, Ashley L

Cerritos CLG (CA)

Aguilar-Cruz, Maritza
Alvarez, Juan C
Avila, Kaylie R
Bhakta, Bindya d
De Lao, Rosanna J
Dones, Francesca C
Gomez, Cynthia
Gomez, Holly L
gonzalez, mabel
Hurtado, Juana I
Lopez, Evangelina
Navarrete, Jasmine D
Palmore, Christopher C
Ramirez, Dennee M
Sandoval, Jaime R
Sifuentes, Colleen A
Singim, Patricia Y
Torres, Jessica C
Villapudua, Angela
Wong, Tracy M

CLG of Alameda (CA)

Abbott, Patricia
Baroff, Caren
Bradford, Roshawnda
Coney, Tonya L
Francis, Debbie
Ho, Aileen
Huynh, Sophia
Lemon, Maurice
McCallister, Leandra L
Molina, Carmela
Shupe, Linsey
Weyand, Teresa K
Wirth, Kristin

CLG of Canyons (CA)

Levy, Heather A
Lichtscheidl, Carmen M

College of DuPage (IL)

Banf, Dana
Hiltner, Maria
Lopez, Melissa
McCafferty, Kathleen
Prusko, Melissa
Villarreal, Adam

Collin COCC (TX)

Megggers, Brian C

Cottey College (MO)

Bistodeau, Rachel K
Cordier, Rachel L
Kato, Ai
Kebert, Alyse M
Knight, Catherine M
Mallinson, Robin A
Rachor, Ella E
Roovaart, Lauren M

Wallis, Erin L
Whetstone, Michelle

Fullerton College (CA)

Booth, Jessica
Cervantes, Liliana
Clendenon, Sandi Y
Hui, Maybelle
Kasabian, Alian
Martinez, Lauren
McClendon, Sr., Irvin L
Vasquez, Harmoni

Georgia Highlands (GA)

Chambers, Brittany D
DeBoard, Lauren L
Dobbs, Loretta L
Flores, Susan
Holcombe, Kaci M
Jordan, Paulette P
Kay, Ashley M
Kerce, Kari R
Mostella, Tameka L
Perez, Kei-Won-Tia
Pulliam, Peggy M
Ross, Angela R
Smith, Melissa J
Sparks, Lori A
Stuenkel, Karen T
Terry, Michele L
Westbrook, Debra A

Houston CC (TX)

Argires, Mark T
Browning-Dolen, Kendel K
Dundrea, Michael
Hearne, April
Khoo, Anselm
Kofele, Ludwig
Lachner, Natascha
Litteer, Susan
Miralles, Cristina
Mitcham-Huff, Shondell
Mujica, Francisco
Nguyen, Kimberly
Nyambisa, Caroline
Plant, Anne
Rincones, Estella

Irvine Valley College (CA)

Edwards, Mark E
Giesler, Natalia C
Hanna, John
Johnson, Angela
Kalantary, Tannaz
Khan, Abrar A
Kim, Kevin S
Landry, Marybeth T
Maor, Erit
Nouranian, Guita
Novack, Leanna M
Ochoa, Yoko H
Perez, Massiel

Johnson COCC (KS)

Lang, Kyle M
Lawrence, Sabine K
Xiong, Ka C

Lehigh Carbon CC (PA)

Boris, Stacey M
Davis, Michelle L
Dearringer, Wendy K
Doane, Brian K
Eifler, Barbara
German, Tiffany N
Harvilla, Tiffany A
Horn, Nicole M
Kuehner, Janessa L
Long, Lisa J
Mann, Heather L
Moakley, Christopher E
Obst, Christopher C
Plaza, Kim L
Shakespeare, Daniel J
Sittler, Lisa A
Sweigert, Diana L
Tretter, Spurgeon L
Wieder, Terry L
Wozniak, April M
Zangl, Jennifer L

Luzerne COCC (PA)

Burke, Michelle M
Camillocchi, Christina M
Davenport, Ella M
Defuso, William L
DeMellier, Daniel R
Featheringill, Sharon L
Fenner, Randolph S
Fetchko, Amanda M
Flueras, Maria
Kane, Kristen
Klinger, Bridget A
Krout, Jocelynnne A
Levitsky, Lisa K
Menichini-Riggs, Brandy
Montini, Tara M
Moore, Valerie J
Moyer, Lisa J
Neaus, Anne K
Nowak, Teresa J
Pearce, Sharon J
Pisano, Stacy D
Posten, Ann Marie
Ripple, Joshua A
Roberts, Jessica L
Roe, Patricia A
Stook, Jason J
Valerio, Amy M
Van Tassel, Christine P
Volin, Joanna M
Wark, Amanda L
Weiss, Rachael A
Williams, Nicole A

Mass Bay CC (MA)

Brettschneider, Lynda A
Conran, Kim P
Gannon, Maureen
Manning, Janice
Marston, Scott D
Woods, Judith V

Mesa CC (AZ)

Wenrick, Elizabeth O

Miles CC (MT)

Abbott, Tanys R
Benson, Adam P
Cozzens, Tammy L
Fernandez, Penny L
Hettinger, Chandra D
Larsen, Kathryn J
Pluhar, Brinda M
Reinhart, Rhonda L
Sanderson, Jenna M
Tabolt, Jessica D
Walker, Danette D

Mineral Area CLG (MO)

Bunch, Laura L
Kasmarzik, Marie T
Matlock, Kym
Merrill, Gwendolyn
Stevens, Vicki

Mitchell CLG (CT)

Cyr, Rachel M
Graham, Chelsea H
Houlden, Damian
Molonson, Krystal R
Nygren, Jane C
Parker, Sherry J

Navarro Ellis (TX)

Baker, Blake
Bednar, Lisa
Boyd, Ryan
Callaway, Shaun
Cardenas, Nery
Cervantez, Rene L
Colston, Todd
Crabb, Jonathon T
Cypher, Patrick L
Davis, David
De la Rosa, Mario A
DeVore, Sarah
Dojahn, Amy L
Duckett, Jill
Enriquez, Jr., Luis H
Fabian, Christina E
Fehrenbach, Sheryl
Garn, Lynette T
Harrison, Amber N
Havens, Jack D
Horton, Janice
Johnson, Murita
Jones, Leah
Kaluza, Barbara
Kaufman, Andrew L
Long, Kristin
Mansell, Amy N
Moser, Sarah E
Novy, Haley R
Nunn, Christi
Phillips, Brittany R
Proffitt, Ashley L
Reynolds, Tyneesia K
Rudd, Amanda D
Solomon, Tina M
Taylor, Carolyn
Toliver, Leslie S
Vestal, Yolanda
Winnett, Brenda S

New Members

North Idaho CLG (ID)

Adams, Shelbi D
Brinkman, David J
Carr, Tanya C
Fisher, Kristen T
Howell, Karen S
Pereira, Andrew G

North Lake CLG (TX)

Cox, Rachel A
Daniel, Monica R
Fedorko, Marc J
Flaherty, Kelley M
Fox, Paula J
Franco, Annessa B
Mantello, Monica
Meek, Christian D
Pahari, Pushpendra
Quijada, Aracely
Reed, Jennifer A
Romero, Andrea
Suri, Jaipreet S
Trevino, Robert L
Vasquez, Haim P
Vo, Huong C

Northeast Texas CC (TX)

Ball, Janna D
Bell, Julie D
Blankenship, Cythea K
Brown, Shaquista D
Clair, Sheryl L
Coker, Julie C
Cooner, Shelley A
Cunningham, Karen F
Garrett, Sheena R
Gary, Morgan M
Gray, JoAnn M
Hernandez, Ramon
Herridge, Vanessa M
Jackson, Paula A
Kirkman, E. J
Lanier, Marcus S
Lawton, Brittney M
Martinez, Noemi
Miller, Andre' J
O'Quinn, D. S
Payne, Cecilia Y
Perschbacher, Amanda L
Porter, Autumn L
Robertson, Jeffery D
Robinson, Amber S
Sanchez, Maria T
Simmons, Joyce A
Terry, Rob A
Thompson, Dusty M
Tigert, Dianne M

Orange Coast CLG (CA)

Cassidy, Evan R
Crosby, Tim J
Davis, Ryan A
Dye, Adam J
Fazio, Karen J
Luiz, Emily C
Mackie, Michael J
Mishima, Christopher T
Nguyen, Sarah T
Onaga, Kyle S
Perella, Krystal M
Sautia, Faalavelave M
Scott, Myrna R

Tran, Phung K
Wulfe, Kyle
Xoai, Devant C

Palm Beach CC Eisey

(FL)

Bardakji, Sydney
Kirk, Ashley
Ruff, Stevi

Pasco Hernando CC E

(FL)

Curlington, Anna
Dehner, Amanda G
Digges, John H
Ryan, Megan C
Scheu, Lauren D
Tait, Kimberly L
Walldren Gustat, Maria T

Piedmont Technical CLG

(SC)

Alewine, Misty M
Allen, Pamela D
Ballenger, Lisa C
Barnett, Christina W
Booker, Lashanda N
Brown, Tiffany L
Clayton, Sarah E
Davis, Donna D
Gladden, Roberta B
Graham, Heather R
Gray, Vernicilla B
Greer, William T
Hamilton, Tracy L
Hawthorne, Tonya M
Hesson, Robert B
Holland, Donna B
King, Allison R
Lawter, Gretchen M
Lewis, Toni L
Long, Samantha A
Martin, Teresa D
Minick, Ginger R
Murrell, Linda M
Oggenfuss, Joan E
Olsen, III, Peter C
Parker, Kristen L
Powell, Melissa L
Spann, Belinda A
Taylor, Shanna E
Tompkins, Tyler L
Ware, Cheryl J
Williams, Jackie E
Williams, Matthew G

Saint Louis CC

Meramec (MO)

Bowles, Carolyn
Byrne, Jennifer
Commuso, Christen
Daras, Shawna
Deuser, Lindsey
Garozzo, Teresa
Halbower, Christy
Hoffman, Lynn
Jackson, Christine
Jacobs, Michael
Kendall, Jennifer
LaBruyere, III, Thomas E
Lancaster, Molly
Maddox, Suzanne

Neumann, Emily M
Perepekhina, Eugenia
Steinbruegge, Justin
Stoecker, Erik
Warmbrodt, Jeannie

San Diego Mesa CLG

(CA)

Figg, John R
Razavi, Arta
Stewart, Angela M

San Juan CLG (CA)

Garcia, Jessica
Patscheck, Shellie A
Potter, Kymbra M
Stevenson, Shane S
Turman, Erin A
Vandever, Katrina K

Santiago Canyon CLG

(CA)

Clason, Kirsti A
Hafner, Susan M
McCallion III, James F
Miles, Anthony R
Phayakapong, Shane
Satchell, Chantelly J
Sirovy, Shannon
Soni, Neha P
Vieux, Christina R

Seminole State CLG

(OK)

Brewer, Mary F
Hamilton, Micah D
Lee, Debbie M
Moore, Phyllis
Parker, Carol L
Perryman, Michelle
Roberts, Karen E
Rowe, Katherine
Tucker, Debra L

SUNY at Alfred (NY)

Chang, Betty
Doll, Christopher M
Fry, Jillian L
Jones, Matthew J
Leech, Kayleigh M
Shaw, Heidi M
Smith, Stacey L
Somma, Ciji

Temple CLG (TX)

Aguilar, LaDonna M
Arisco, Ashley C
Barnett, Rebekah P
Bess, Tracy A
Buchanan, Christa M
Caldwell, Jennie A
Caldwell, Sara G
Capraun, Corinna N
Cass, Tammy M
Deweese, Casey W
Dorsey, Tracy A
Durbin, Lindsay B
Eskew, Gillian M
Ford, Misti R
Graves, Sara A
Kerby, Deidre J
Kimbale, Artimesha T
King, Loni J
Laurel, Dianne L
Martinka, Sarah K
Meals, Jennifer D
Miller, Helen E
Moody, Sherri S
Morris, Peggy A
Nicholson, Cassie A
Phelps, Emily M
Portillo, Holly
Price, Jennifer L
Roberts, Holly J
Rodriguez, Laura A
Rushing, Sarah D
Simmons, Sondra J

Smith, Arica E
Solis, Cynthia L
Sparks, Phillip E
Stromberg, Diane M
Sudduth, Tracy A
Svetly, David A
Svetly, Sherri L
Tindell, Kaitlyn V
Tobin, Thomas A
Trujillo, Diana
Trujillo, Elizabeth
Tupper, Phyllis A
Vance, Kristi J
Vance, Sean C
Vargas, Stephanie G
Vreeland, Mark A
Walthall, Felicia L
Zavodny, Alyssa B

Waubensee CC (IL)

Ament, Meredith L
Barnes, Bethany A
Downie, Jenna R
Fozio-Thielk, Lisa A
Haring, Tom E
Hume, Megan E
Keller, David
Keller, Patrice A
Maloney, Amanda R
Michelson, Brett R
Sihler, Laura K
Sliepka, Alex C
Wells, Jennifer
Wojcik, Tom

Western Oklahoma

State CLG (OK)

Alvarez, Cynthia
Lytle, Lisa
Souza, Edie
Thurwanger, Stephen

New Chapters

Navarro College (Ellis Campus)

Waxahachie, TX (Southwest Region)

Charter Date:11/3/2005

Faculty advisor:Nicole Mansell

San Juan College

Farmington, NM (Western / Rocky Mountain Region)

Charter Date:1/26/2006

Faculty Advisor:Dr Brian Perry

San Joaquin Delta College

Stockton, CA (Western / Rocky Mountain Region)

Charter Date:4/27/2006

New Faculty Advisors

Navarro College, Ellis CampusNicole Mansell

San Juan CollegeDr Brian Perry

County College of MorrisDolores Reilly

Ready for Graduation?

Graduation Package (Stole, Honor Cord, Medallion, Tassel) only 55.00 at

<http://store.psibeta.org>

Chapter Activities

(Continued from page 8)

the natural transition from Psi Beta is to Psi Chi. Ideally, I would like to work as a larger team on research and community service opportunities within our scholarly district," Allen said.

Western/Rocky Mountain Region Cerritos College Chapter (CA)

The Psi Beta Chapter at Cerritos College continues its tradition of bringing multiple speakers to present on a variety of subjects and fields in psychology. From Dr. Mark Duva presenting the causes and effects of eating habits, to Dr. Kirk Hartley from Metropolitan State Hospital discussing aggressive behavior, and Dr. Georgina Guy's informing presentation about evaluating the differences and pros and cons between a PsyD and a PhD, this semester has provided its club members with a wealth of information. Along with its renowned speaker series, the club is planning its bi-annual workshop, which will address love, sex and relationships between young adults.

The club also continues serving the community by participating in the Red Cross blood donations and volunteering at nearby Metropolitan State Hospital every semester. This semester, several members spent a Sunday afternoon with the adolescent unit at the hospital where they served as an audience for a talent show put on by adolescents at the unit, served food during the barbeque and helped at the craft booths which included face painting and cookie decorating. The chapter will be visiting Metropolitan State Hospital once again in April, volunteering at one of the adult units.

As well as educational opportunities, the club has held a few social events including a movie night and a discussion night with the Philosophy club, and possible plans to hold events with other active clubs on campus. The Psi Beta chapter at Cerritos hopes to integrate its activities and experiences with other clubs on campus enriching a broader audience and building an extensive networking community.

Many of the members plan to attend the Western Psychological Conference in Palm Springs, not just for the experience but also to support seven of its members who will be presenting their research at the conference.

Lastly, two successful fundraisers have been held this semester including a bake sale and a TV taping at the Warner Brothers Studios. These fundraisers are held to help pay for the club's various activities as well as a Psi Beta induction banquet at the end of the semester.

Clover Park Technical College

Two Psi Beta Members were recently honored. Mary Dye and Josette Parker each received a State of Washington All Academic Award. Both will now proceed to the national competition level. Mary and Josette graduated from Clover Park Technical College at the end of Winter quarter and will both be furthering their education at The Evergreen State College to pursue baccalaureate degrees.

San Diego Mesa College (CA)

What might be the most notable accomplishment of the last two semesters of the San Diego Mesa College chapter of Psi Beta has been the sense of unity and fellowship amongst its members. We are glad to see both returning members, as well as many new faces join together and contribute all they can to Psi Beta, and in return, get so much out of it.

We have been fortunate enough to have distinguished Psi Beta Alumni return to provide us with insight about what they are doing now, their path of success, and directions as to how we would best pursue our own career goals. We were privileged to have Thomas Thesen, Ph.D., present his research on brain imaging techniques in neuroscience, Iva Macaspac conduct a workshop on portfolio development, and Stephan Scherer, PhD, inform us about using behavioral approaches in counseling.

In an effort to raise funds, we are currently selling candy. Our chapter President Angela Stewart was successful in obtaining a \$500 stipend from our Associated Student Government, and an additional \$500 from the President of San Diego Mesa College to support sending Psi Beta poster presenters to the WPA conference. More importantly, we now have a firm commitment from President Zepeda to appropriate \$500 from our school budget to Psi Beta's attendance to WPA every year. We take pride in making this our legacy.

Scholarship news: President Angee Stewart is a 3rd team All State scholar. Alumni news: Jason Daniel has been accepted into the joint doctoral Public Health program with University of California San Diego and San Diego State University, and Donald Mason has been accepted into graduate program at Boston University. *Ψβ*

Miles Community College (MT)

The Miles Community College chapter of the Psi Beta national collegiate honor society in Psychology conducted a successful food drive on Thursday, March 30-31. Psi Beta members collected and delivered 1,560 Lbs of non-perishable food items to the Custer County Food Bank. *Ψβ*

Psychology Synergy Conference

(Continued from page 7)

Specific to Psi Beta, the conference will feature exclusive workshops run by Psi Beta National Council Members for advisors and student officers of Psi Beta National Honor Society. Workshops will include: Advisor and Officer Training, Induction 101, Psi Beta to Psi Chi: Making the Transition & Facilitating Student Research.

Faculty are encouraged to not only attend this conference, but to present their research and/or teaching demonstrations. In addition, students will have the opportunity to present their research and may submit abstracts through August 1, 2006. See details about the conference and an on-line application @ <http://psibeta.ccccd.edu>. Registration costs are \$ 35.00 for students & \$50.00 for faculty, which includes a Friday afternoon luncheon, Saturday morning breakfast and a conference t-shirt. *Ψβ*



PSI BETA

2522 North Amarado Street
Wichita, Kansas 67205

Non-Profit Org
U.S. Postage
PAID
Wichita, KS
Permit #1536

Address Information:

Please note: The above Address is for bulk mailing purposes ONLY.

Please use the following address for payments, orders and any other communications.

8918 West 21st Street North
Suite 200 #179
Wichita, KS 67205
Phone: 888-PSI-BETA Fax: 316-721-7631
Email: michael@psibeta.org

Web Addresses

Psi Beta Home Page..... <http://psibeta.org>
Psi Beta Store..... <http://store.psibeta.org>
Address and e-mail changes..... <http://member.psibeta.org>

Telephone Numbers:

Main Number(888) PSI-BETA or (888)774-2382
Fax Number(714) 265-7160

Extensions

Jerry Rudmann, Executive Director.....Ext 701
Michael McEwen, Chapter Relations Director.....Ext 702

Psi Beta Newsletter Subscription

(Select One)

\$5.00 Per Year (2) issues/year
First Issue desired Fall Spring

or

10\$ for 10 copies of One Issue
Specify Issue _____

Send to: _____

Address: _____

City/State/Zip: _____

Mail this form along with money order or check to:

Psi Beta, Inc
8918 West 21st Street North, Suite 200 #179
Wichita, Ks 67205

Contributions to Psi Beta

Psi Beta is a 501(c) (3) Corporation; all contributions are tax deductible to the extent allowed by law. Please make your contribution check payable to Psi Beta, Inc and mail to Psi Beta, Inc 8918 West 21st Street North, Suite 200 #179, Wichita, Ks 67205

Friends.....Under \$25 Gold Circle.....\$250 to \$500
Advocates.....\$25 to \$100 Key Circle.....\$500 to \$1,000
Blue Circle.....\$100 to \$250 Honor Circle.....\$1000 and over
Amount of contribution enclosed

In honor of _____

In memory of _____

Name _____

Address _____

City/State/Zip _____

Telephone/email _____